

# The Ossau Valley

LEV  
4

GRP ®51

## Louvie-Juzon / Port d'Aste / Granges du Dès



*This long hike between forests and barns offers an unbeatable view of the valley and the Pic du Midi d'Ossau.*

*The “ports” of Castet and Aste are transit areas. With their pastures and barns, they provide a place for the herds to stay before the great transhumance to the summer pastures or the descent to the valley for the winter.*

At the junction with a track, turn right.

- D** At the end of the car park, turn left into Rue Pasteur and then right. Walk past Place Camps and turn right into Rue Bernis. Continue until you reach the corner of the cemetery. Here, follow a gravel path to the left to a small plateau (picnic tables).
- 0h10** ① 710551 E - 4773279 N Go up to the right towards the east. At the intersection, turn left. Pass a stream and enter a clearing with ferns.
- 0h30** ② 710764 E - 4773207 N Turn left and go up.
- 1h00** ③ 711494 E - 4773196 N Take a left turn into a clearing
- 1h15** ④ 712004 E - 4773213 N Continue straight ahead. Join a track. Go past a water supply, a water trough and a gate. Continue on the tracks, take a right-hand turn at every junction.
- 1h55** ⑤ 713575 E - 4773364 N Continue straight on, still climbing
- 2h10** ⑥ 714135 E - 4773374 N Go up a path in a talweg.
- 2h20** ⑦ 714237 E - 4772852 N Col Deus Coigts. Go down into the forest.
- 2h30** ⑧ 714622 E - 4772864 N From the hut, go down to the plateau and head for a track that starts opposite.
- 2h40** ⑨ 714645 E - 4772477 N Climb upwards into the forest.
- 3h10** ⑩ 713321 E - 4771166 N At Port de Castet, take the road to the left. Walk past some barns and continue straight ahead on a track and then to the right. Go through two gates and up into the forest and then onto a grassy path.
- 3h40** ⑪ 711733 E - 4768938 N At the water trough, go up into the valley and join the track above.
- 3h50** ⑫ 711798 E - 4768561 N Turn left onto the track and at the second bend turn right onto a steep path in a wood.
- 4h10** ⑬ 711811 E - 4768298 N At the pass, go down. Leave the forest and turn left.
- 4h20** ⑭ 711867 E - 4768063 N Turn right back under some beech trees, cross over and join a path in the grass. Go down towards a path to the right of the barns.
- 4h30** ⑮ 711800 E - 4767772 N Walk past the barns in Port d'Aste and take the track that goes up to the left.
- 4h40** ⑯ 711812 E - 4766882 N At the first bend in the road turn right and go downhill. Pass below a fence and then cross. Beware of the steep grassy slope, stay on the track. Cross in the rocky areas.
- 5h05** ⑰ 712575 E - 4766062 N Take the track on the right, go down 50m, then left. Cabane (hut) de Dès.
- 5h10** Arrival 712664 E - 4765934 N
- Variant from Louvie to Port de Castet via the village of Castet. Reduces the walking time by 3 hours.




**D** Louvie-Juzon, Foyer Rural.

**GPS** WGS 84 UTM 30T  
710023 E - 4773521 N

 → 6h

 17km

 1470m

 Yellow and red markers

**★ Don't miss:**

- The view of the Pic du Midi d'Ossau and the valley
- The barns of Port d'Aste
- Griffon vultures

**⚠ Note:**

- Steep path between the Port d'Aste and the barns in Dès. Do not take on this crossing when there is snow on the slopes above. Risk of avalanches.
- Use horsefly and tick repellent from June to August
- Take an IGN Top 25 map of the area

**Notre Dame de l'Ayguelade.**

During the great invasions, the Normans went up the valley to Bielle. The Lord of Béon was determined to resist, and assembled an army in the castle of Castet.

To provoke the people of Ossau, the head of the Normans captured the beautiful Margalide, the wife of the Lord. The noble knight went out of the castle alone to fight and to free his beloved. The giant Norman would have made mincemeat of the young lord if Margalide had not neutralised him during the fight by throwing a scarf over his head. Caught off guard and blinded, the giant was decapitated. The invaders fled. To thank the Virgin for having saved his wife and his valley, the Lord of Béon had a chapel built at Ayguelade, the site of the duel. As legend has it...

**Information :**

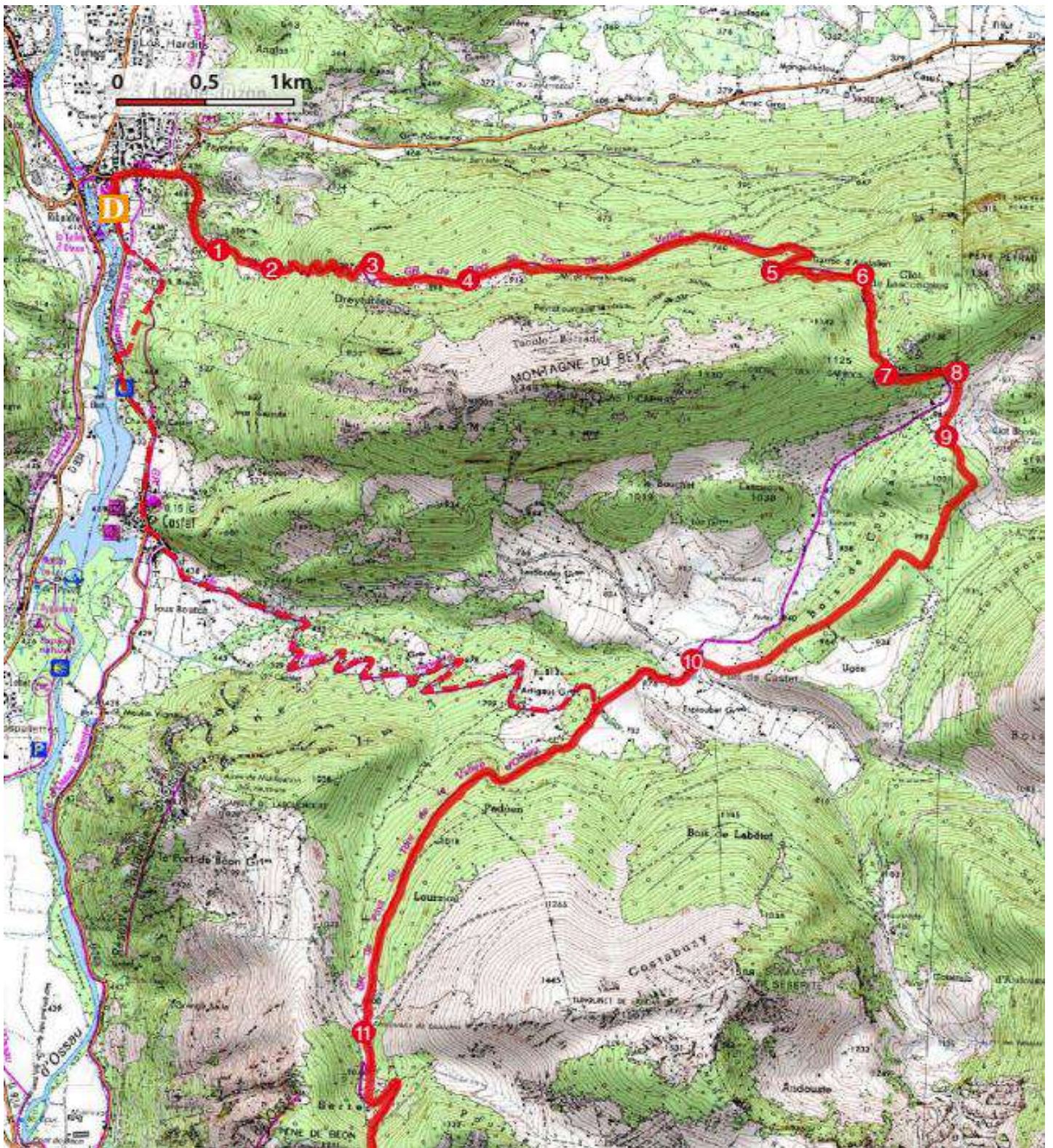
Laruns/Artouste Tourist Information Office : +33 (0)5 59 05 31 41  
Eaux-Bonnes/Gourette Tourist Information Office : +33 (0)5 59 05 33 08  
Arudy Tourist Information Office : +33 (0)5 59 05 77 11



**Made by:**

Communauté de Communes de la Vallée d'Ossau  
1 avenue des Pyrénées – 64260 Arudy : +33 (0)5 59 05 66 77



**Information :**

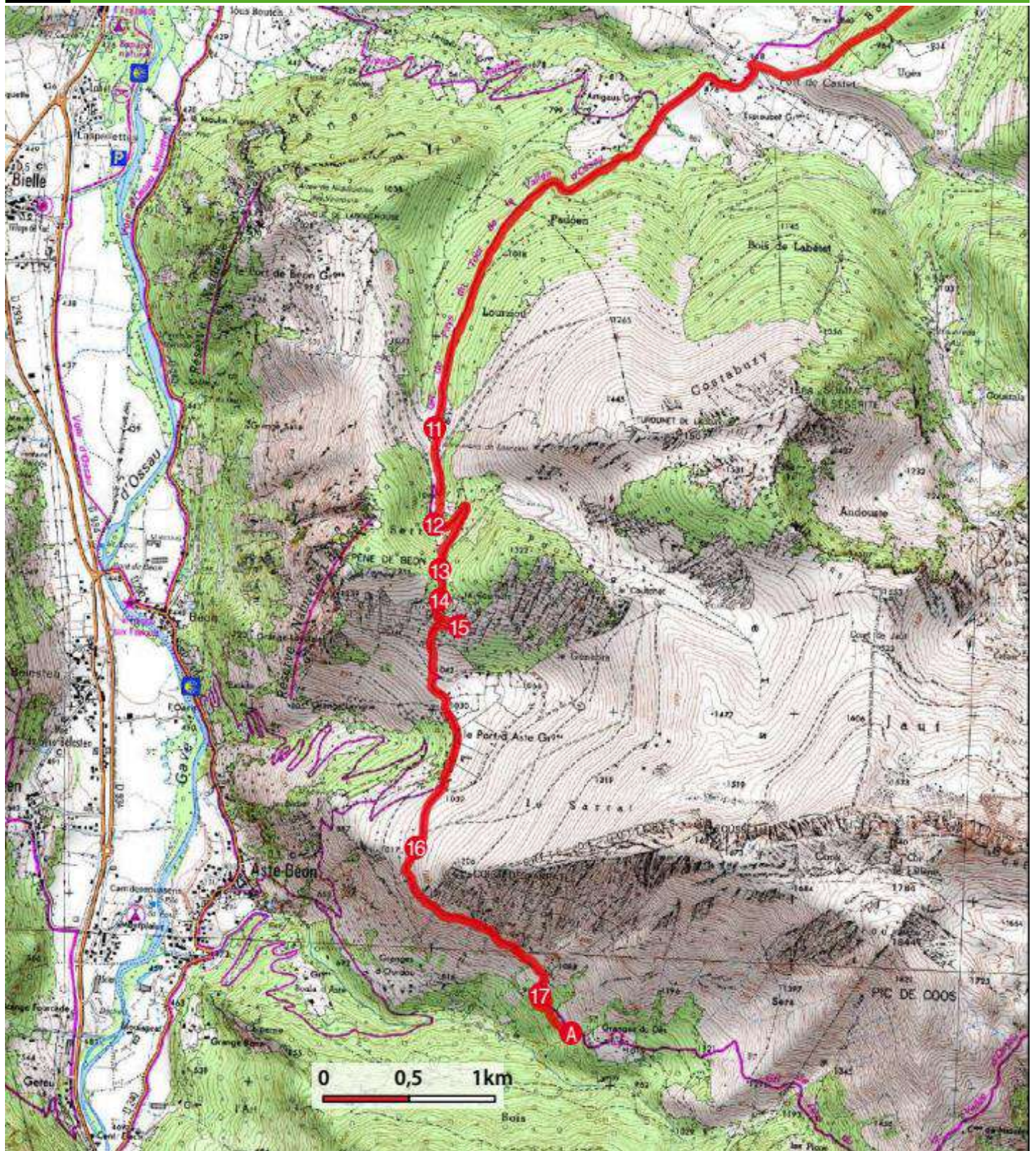
Laruns/Artouste Tourist Information Office : +33 (0)5 59 05 31 41  
Eaux-Bonnes/Gourette Tourist Information Office : +33 (0)5 59 05 33 08  
Arudy Tourist Information Office : +33 (0)5 59 05 77 11

Vallée  
d'**OSSAU**  
PYRÉNÉES  
Office de Tourisme

**Made by:**

Communauté de Communes de la Vallée d'Ossau  
1 avenue des Pyrénées – 64260 Arudy : +33 (0)5 59 05 66 77



**Information :**

Laruns/Artouste Tourist Information Office : +33 (0)5 59 05 31 41  
Eaux-Bonnes/Gourette Tourist Information Office : +33 (0)5 59 05 33 08  
Arudy Tourist Information Office : +33 (0)5 59 05 77 11

Vallee  
d'OSSAU  
PYRÉNÉES  
Office de Tourisme

**Made by:**

Communauté de Communes de la Vallée d'Ossau  
1 avenue des Pyrénées – 64260 Arudy +33 (0)5 59 05 66 77



# Choose your hike

For each route, you will find technical and practical information to help you choose your hike

## Markers

Direction	Local routes and PR®	GRP®	GR®
Right way			
Turn left			
Turn right			
Wrong way			



GR®, GRP® and PR® are registered trademarks of the French Hiking Federation. Some routes have been selected by the French Hiking Federation according to quality criteria. They are PR® certified.

## Levels of difficulty

The hikes are classified by order of difficulty defined by a colour code following the recommendations of the French Hiking Federation:

- Very easy, less than 2 hours walking. Ideal for families, on well-marked tracks
- Easy, less than 3 hours walking. Suitable for families, on tracks with sometimes more difficult passages.
- Difficult, less than 4 hours walking. For hikers used to walking, with some quite intense sections or steep slopes.
- Very difficult, more than 4 hours of walking. For experienced and fit hikers. The itinerary can be long and technical (strong elevation gain, tricky passages).

## GPS coordinates

30T 710703O - 4776694N

## Start

- Walking time, given in hours. This estimated time takes into account the length of the hike, the elevation gain and the possible difficulties.
- Elevation gain, expressed in metres. For each circuit, the value corresponds to the cumulative elevation gain.
- Distance, the value expressed in kilometres corresponds to the total length of the route.

## Recommendations

### Before you leave

Check your equipment, the difficulty of the circuit and the weather conditions  
If you are going alone, communicate your itinerary to friends and family  
See the map of controlled fires

### In the mountains / pastoral areas

Follow the marked paths and close gates after passing through  
Respect nature and bring waste back  
If accompanied by a dog, make sure that it is allowed on the chosen route and keep it on a lead  
During the hunting season, avoid hunting areas or turn back  
Go around herds and do not approach farm dogs (do not feed them or pet them)

### National Park

The heart of the National Park is a natural territory and is open to all, but is subject to a code of conduct. Dogs are not allowed, even on a lead. No fires, no mountain bikes, no wild camping, only bivouacs are allowed - a small tent can be set up for the night from 7 pm and taken down in the morning before 9 am. It must be set up more than an hour's walk from any motorised access.

European emergency call : 112